



## Driver's Dashboard Under Cover Removal/ Installation

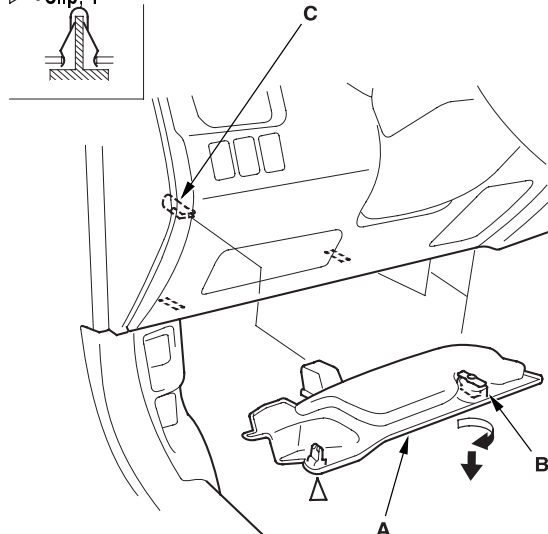
### NOTE:

- Take care not to scratch the dashboard and related parts.
- LHD is shown, RHD is symmetrical.

1. Remove the driver's dashboard under cover (A).
  - 1 Turn the lock knob (B) 90°.
  - 2 Gently pull down the rear edge to release the clip.
  - 3 Pull the cover away to release it from the clip (C).

### Fastener Location

▷ : Clip, 1



2. Install the cover in the reverse order of removal.

## Dashboard Center Panel Removal/ Installation

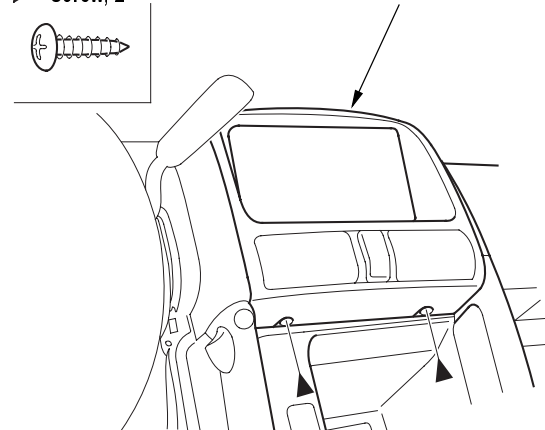
### NOTE:

- Take care not to scratch the dashboard and related parts.
- LHD is shown, RHD is symmetrical.

1. Remove the screws from the bottom of the dashboard center panel (A).

### Fastener Locations

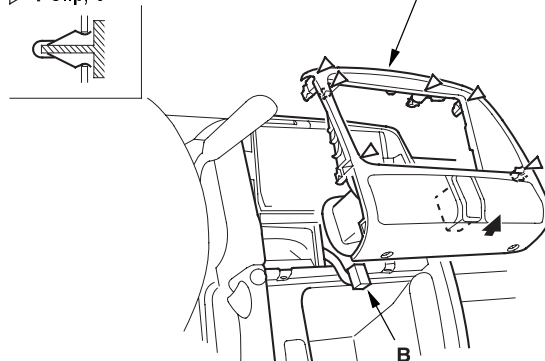
▷ : Screw, 2



2. Pull out on the bottom of the dashboard center panel (A) to make a gap between the dashboard and panel. Gently pull out along the panel to release the clips, then remove the panel. Disconnect the hazard warning switch connector (B).

### Fastener Locations

▷ : Clip, 6



3. Install the panel in the reverse order of removal, and make sure the hazard warning switch connector is plugged in properly.