

HONDA

INSTALLATION INSTRUCTIONS

Accessory

REAR SPORT TRIM
P/N 08P02-S10-100F

Application

2001 CR-V

Publications No.

All 21696

Issue Date

OCT 2000

PARTS LIST

Rear pipe

Bracket base

Sub-bracket

Bracket

Center trim

2 Corner caps

6 Screws, 5 x 50 mm

6 Washers, 5 mm

Square clip nut, 6 mm

3 Round clip nuts, 6 mm

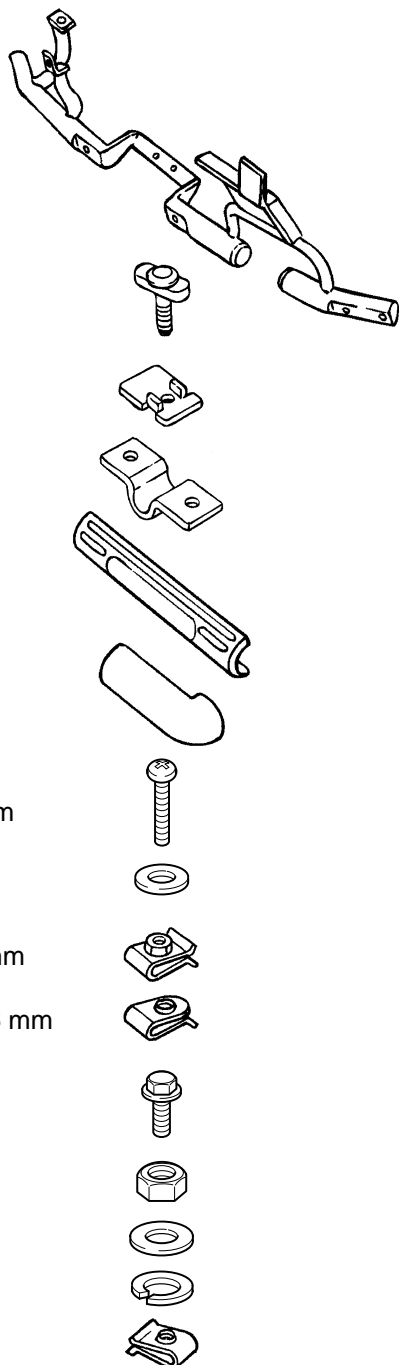
6 Bolts, 6 x 16 mm

Nut, 6 mm

Washer, 6 mm

Lock washer

6 Clip nuts, 5 mm



TOOLS REQUIRED

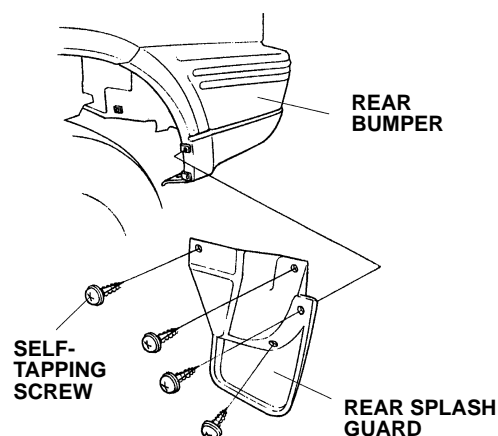
10 mm Socket

Ratchet

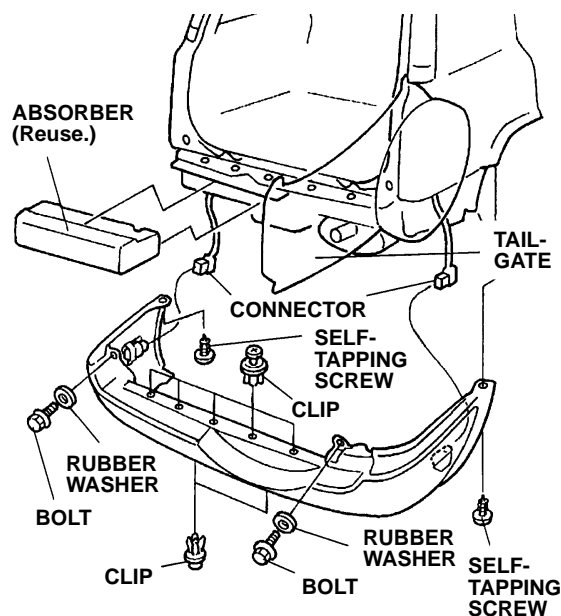
Phillips screwdriver

INSTALLATION

1. Remove the rear splash guard (four self-tapping screws). Repeat on the other side.

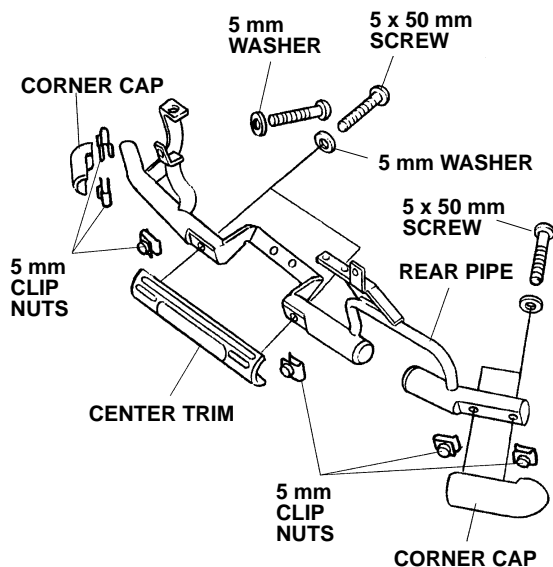


2. Remove the rear bumper:
 - Open the tailgate.
 - Remove the two self-tapping screws, two bolts, and seven clips.

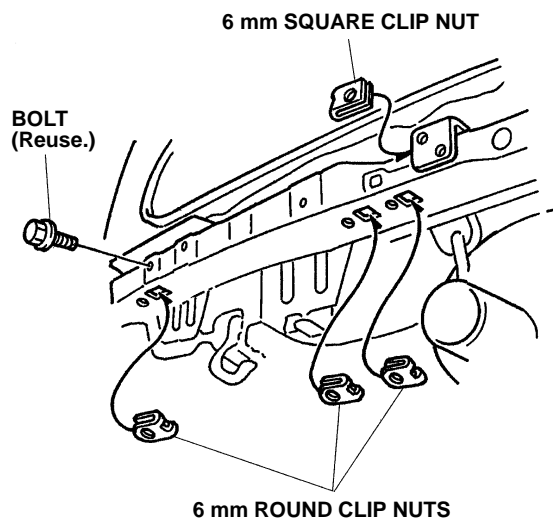


- Unplug the connectors from the side marker lamps, and remove the bumper by pulling it toward you.
- Remove the absorber.

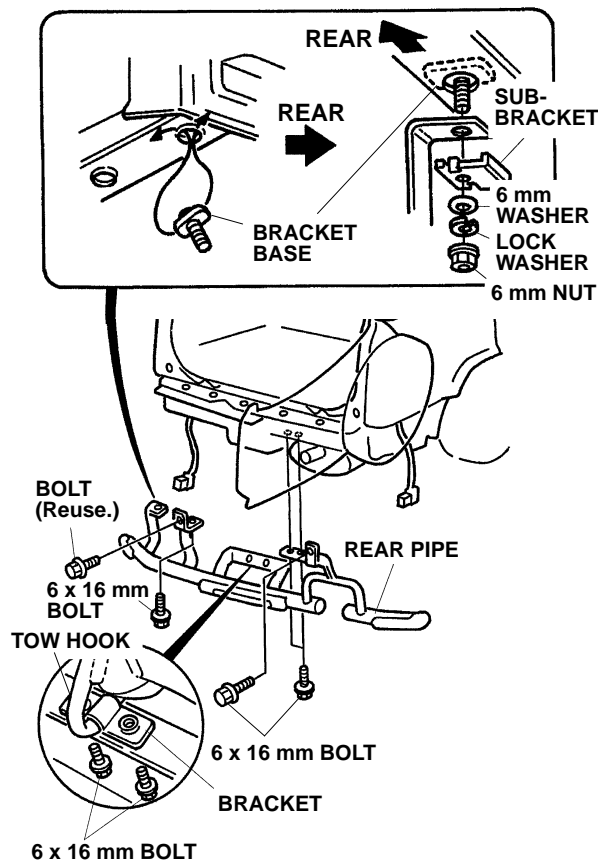
3. Slide the two 5 mm clip nuts onto the center trim, then install the trim on the rear pipe using the two 5 x 50 mm screws and two 5 mm washers.



4. Slide the two 5 mm clip nuts onto each corner cap and install the caps on the rear pipe using the two 5 x 50 mm screws and 5 mm washers.
5. Remove and retain the bolt from the body.



6. Slide a 6 mm square clip nut and three 6 mm round clip nuts onto the body through the square holes in the directions shown.
7. From under the frame, set the bracket base in the hole in the frame. Loosely install the rear pipe on the base using the sub-bracket, 6 mm washer, lock washer, and 6 mm nut. Do not allow the bracket base to fall inside the body. Make sure the rear pipe brackets are between the wire harness and the body.



8. Reinstall the bolt removed in step 5 and the four 6 x 16 mm bolts from the kit, but do not tighten them yet.
9. Temporarily attach the rear pipe to the towing hook using the bracket and two 6 x 16 mm bolts.
10. Tighten the three bottom 6 mm bolts and the 6 mm nut first, then tighten the two tow hook bracket bolts and the two remaining 6 mm bolts.
11. Reinstall the absorber and the rear bumper.
12. Reinstall the rear splash guards.