



FC-280PC/SC

MABUCHI MOTOR
Carbon-brush motors

OUTPUT : 0.1W~4.0W (APPROX)

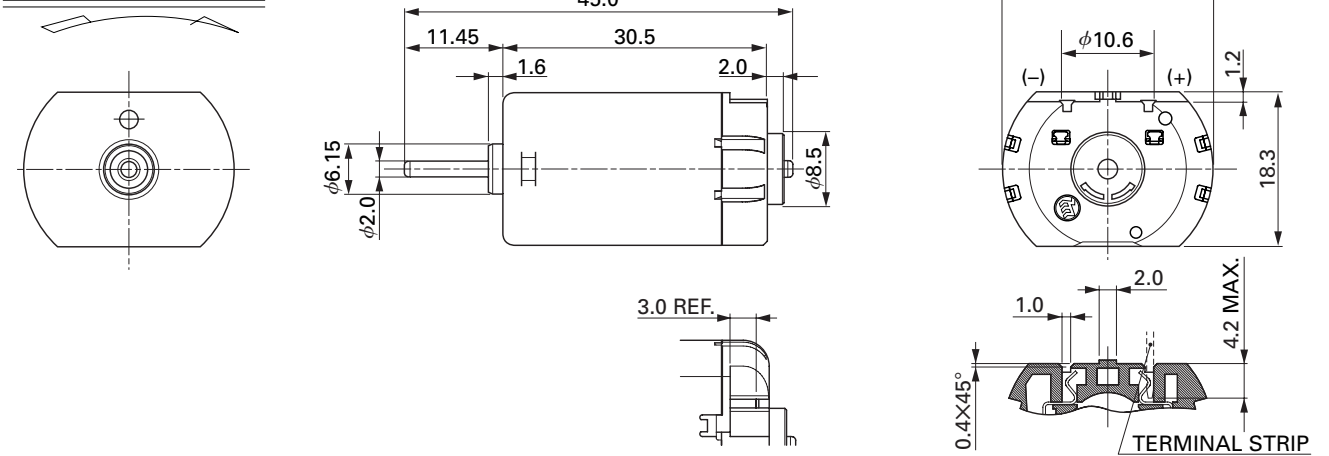
WEIGHT : 38g (APPROX)

Typical Applications Automotive Products : Retractable Rearview Mirror / Door Lock Actuator / Steering Lock

MODEL	VOLTAGE		NO LOAD		AT MAXIMUM EFFICIENCY					STALL		
	OPERATING RANGE	NOMINAL	SPEED	CURRENT	SPEED	CURRENT	TORQUE		OUTPUT	TORQUE		CURRENT
			r/min	A	r/min	A	mN-m	g-cm	W	mN-m	g-cm	A
FC-280PC-22125 (*1)	8~16	12V CONSTANT	12500	0.090	11090	0.71	4.76	48.6	5.52	42.2	430	5.56
FC-280SC-18180	8~16	12V CONSTANT	9600	0.070	8270	0.43	3.95	40.3	3.42	28.5	291	2.70
FC-280SC-20150	8~16	12V CONSTANT	11800	0.081	10310	0.56	4.14	42.2	4.47	32.9	335	3.90
FC-280SC-16220	8~16	12V CONSTANT	7900	0.055	6780	0.33	3.27	33.3	2.32	23.0	234	2.00

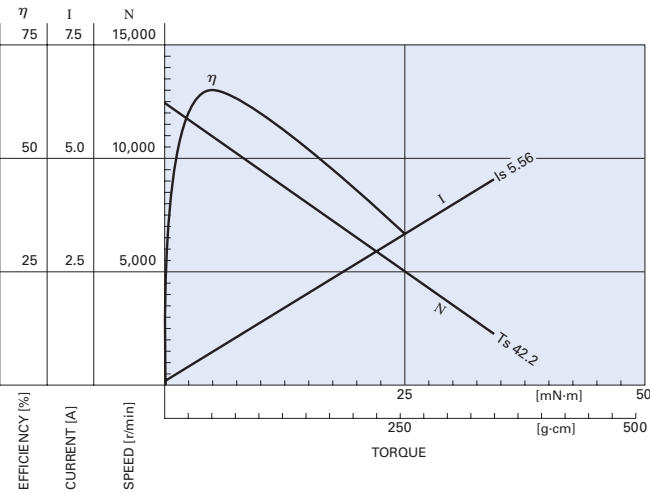
(*1) With flux yoke, WEIGHT : 45g(APPROX)

DIRECTION OF ROTATION



UNIT: MILLIMETERS

FC-280PC-22125 12.0V



FC-280SC-18180 12.0V

